



Lloyd Williams
& Hughes

Arwerthwyr a Priswyr
Auctioneers and Valuers

www.lwhbryncir.co.uk

Dispersal Sale of Farm Machinery & Tools at Glyddyn Mawr, Y Ffôr

By Kind Instructions of Sion & Robin Jones, Bryn Aerau, Rhosfawr

Undertaken by **Arwerthwyr LWH Auctioneers**, Canolfan Arwerthiant Bryncir,
Bryncir, Garndolbenmaen LL51 9LX

To be held at Glyddyn Mawr, Y Ffôr, Pwllheli, Gwynedd, LL53 6RR.
Also live online on the MartEye platform – www.bryncir.marteye.ie



Saturday 21st June 2025

Sale to Commence at 11.00am

Viewing: Friday 20th June 11.00am to 3pm

Lloyd Williams & Hughes

Dispersal Sale of Tractors and Farm Machinery + Tools

By Kind Instructions of Sion & Robin Jones, Bryn Aerau, Rhosfawr, Pwllheli

Viewing

Viewing available on the Friday 20th June between 11.00am and 3pm.

Buyer's Premium

All items will be subject to a buyer's premium of 6% plus VAT.

Location

GLYDDYN MAWR, Y FFÔR, PWLLHELI, GWYNEDD, LL53 6RR, see map overleaf.

Collection

All items must be paid for on the day of sale and may only be removed when paid for in full in accordance with the conditions of sale. Buyers will have until Friday 27th June to remove purchased items to collect items as soon as possible. All items remaining on site will be left at the purchasers risk.

Auctioneers

Canolfan Arwerthiant Bryncir Cyf / Bryncir Auction Centre Ltd	01766 530 828
John Huw Hughes 07780 705 836	John Lloyd Williams 07780 705 837
Hywel Evans 07747 620 082	Sion Lloyd Williams 07818 403 272
Rhion Owen 07979 199 768	

Refreshments

Caterers will be in attendance

Descriptions

Descriptions were taken on the date of inspection prior sale and information provided by the vendor.

Buyer Registration

Buyers must register with Lloyd Williams & Hughes prior to bidding, you cannot purchase any item without a buyer number. New customers will need to register by providing their address and contact details to obtain a buyer number. Buyer numbers are permanent therefore you only need to register once, existing customers can be reminded of their existing number prior to the sale at the office.

Payment and New Customers

Newly registered buyer accounts must be settled on the day of sale, no credit will be available.

Money Laundering

Buyers may settle their account with notes, coins or cheques in sterling provided that the total amount payable does not exceed the equivalent of £10,000. Any balance above this amount must be paid by an alternative method. Card facilities available on day of sale.

Money Laundering

Bidding will be live and online on MartEye platform if anybody cannot be present on the day of sale. Full instructions can be found on our MartEye profile – www.bryncir.marteye.ie

Conditions of Sale

The sale is held in accordance with the Conditions of Sale which will be on display on the sale day.

ALL ITEMS ARE SOLD AS SEEN WITH NO GUARANTEE, NO WARRANTIES ARE GIVEN OR IMPLIED.

Lloyd Williams & Hughes

Dispersal Sale of Tractors + Farm Implements + Tools

Commencing at 11.00am on Saturday 21st June at Glyddyn Mawr, Y Ffôr, Pwllheli.

ALL ITEMS SUBJECT TO VAT @ 20%

ALL ITEMS SUBJECT TO BUYERS PREMIUM @ 6% (+VAT)

LOT NUMBER	ITEM DESCRIPTION
1	Springs + Jacks
2	Top Links
3	Tipping Body Ram with Brackets + Pivots
4	Trolley Jack + Bottle Jacks
5	P.T.O Shafts
6	Nuts + Bolts
7	Chicken Hut + Oil Cans + Blow Lamps + Tecalemit Pressure Clock
8	Powerpack Metering Unit + Shearing Machines 3 x Shearing Machines - Lister, Hoover, P.T.O Cooper Stewart
9	Plough + Flail Parts + Manure Spreader Parts
10	Manual Guillotine
11	The Olympic Bantam Oil Cooled Electric Welder + Pipe Bender
12	Anvil
13	Various Boxes, Crates and Chests
14	2 x Wooden Chests
15	Vibrating Poker + Belle Mixer and Stand
16	Various Nuts + Bolts + Other Small Bits
17	Hydraulic Arms for MF35 or MF65
18	Various Chains, Pulleys and Sprockets
19	Rapidor Manchester Power Hacksaw + Castrol Pressure Greaser + Roller Stand
20	Spool Valves
21	Heat Lamps + Electric Fence Energiser

Lloyd Williams & Hughes

22	Kismet Trolley Compressor + Lamp + Cobbler Shoe Moulds
23	Antique Water Pump
24	Turner 5 Speed Gearbox + Injector Pump Gearbox suitable for Ford D Series
25	Ford D Series 6 Cylinder Engine - Engine Model - E2854
26	Various Tools
27	Various Large Wrenches + Sockets
28	Various Tines + Claas 60 Forage Harvester Parts
29	Water Troughs
30	Churns + Bottles + Buckets
31	Wheels + Tyres
32	2 x Fordson Dexta Engines
33	Fordson Dexta Hydraulic Arms + Mini Leyland Parts
34	Fordson Dexta Hydraulic Tops + Pick Up Hitch + Steering Box
35	Fordson Dexta Fuel Tank + Grill + Air Cleaner + Dash Cowlings
36	Fordson Dexta Clutch + Radiator + Fuel Pump + Water Pump
37	Sheep Weighing Scales
38	Lawnmaster 75 Mower + Black & Decker Mower + Strimmer
39	2 x Fordson Major Cast Wheels
40	Fordson Major Tractor Parts Live Drive Pressure Plate + Steering Box + Injectors + Pulley + other parts
41	Various Motors
42	Claas Jaguar 60E Ford Industrial Engine - 2300 Hours
43	Various Nuts + Bolts + Tools
44	Calf Cubicles
45	Dog Crate + Chicken Hutch

Lloyd Williams & Hughes

46	Pillar Drills
47	High Lift Jacks + Lamps
48	Blob Marker + Vicon Spinner Cover + Electric Fence Posts
49	Various Starter Motors
50	Silent Generator
51	Scare Guns + Antique Seeder
52	Sheep Hurdles
53	Sheep Hurdles
54	Oil Cans
55	Tobacco Tins
56	Ferguson Tractor Parts
57	Carnegie & Layton Weighing Scales + 2x 56lbs Weights
58	Weighing Scale Clocks
59	Husqvarna L56 Chainsaw
60	Husqvarna L56 Chainsaw
61	Leica NA820 Automatic Optical Level
62	Atlas Copco Jig-Saw
63	Ford 5000 Parts
64	Petters Engines - 1x Diesel + 1x Petrol
65	Perkins 3 Cylinder Engine
66	Perkins 6.354 Engine from a Dodge Commando Lorry
67	Deutz 2 Cylinder Air Cooled Engine
68	Perkins 248 Industrial Engine
69	Teagle Romix 200H Spiral Mix
70	Perkins 248 Engines (Spares)



Lloyd Williams & Hughes

71	V L Churchill & Co Press
72	Izuzu 4 BG1 Engine (Spares)
73	Workbench with Vice + Other Tools
74	Geith Manual Quick Hitch + Manual Quick Hitch Geith hitch suitable for JCB JS130
75	Adapter Hitch (Euro to Trima)
76	Bamford OC2 Roller Mill
77	Ford 46 Tractor Spare Parts
78	Ford 46 Tractor Cab Glasses
79	Pillar Drill + Threading Machine + Other Small Drills
80	Various Belts
81	Various Sledge Hammer/Fencing Mallet Tops etc.
82	Chains
83	Volvo Excavator Buckets
84	Spades + Axes + Saws
85	Row Crop Wheels from Ford 46
86	Fly Press
87	Axles
88	Grain Drying Ductings
89	Tower Scaffold
90	Aveling-Barford Steam Steriliser
91	Various Slate Slabs
92	Various Slate Slabs
93	Various Slate Slabs
94	Various Slate Slabs
95	Various Slate Slabs

Lloyd Williams & Hughes

96	Cosmic 500 Fertiliser Spinner
97	6x Galvanised Walkthrough Feeder
98	Galvanised Cattle Feeding Trough
99	Galvanised Cattle Feeding Trough
100	I.B.C Tank
101	Sheep Ring Feeder
102	Sheep Ring Feeder
103	Sheep Ring Feeder
104	Ferguson Spring Tine Cultivator
105	Ferguson Folding Spike Harrow
106	Ferguson Two-Furrow Plough
107	Ferguson Two-Furrow Plough
108	Ferguson Three-Furrow Potato Ridger
109	Galvanised Tanks
110	Diesel Pressure Washer - Lombardini Engine
111	Underbody Ram for a 3-way Tipper
112	Various Rams
113	Various Rams
114	Large Transport Box
115	Barrow Trolley
116	Barrow Trolley
117	Barrow Trolley
118	Eight Stud Wheels + Tyres
119	Compressor
120	Fordson Dexta Safety Frame

Lloyd Williams & Hughes

121	Sheep Footbath
122	Cattle Footbath
123	Silo Bags
124	Silage Clamp Netting
125	Silage Clamp Netting
126	2x Feed Troughs
127	Creep Feed Racks
128	3x Hay Racks
129	Bamford Patent Chaff Cutter
130	Cox Chaff Cutter
131	CAC Chaff Cutter
132	8x Galvansied Sheep Feed Trough
133	7x Galvanised Sheep Feed Trough
134	Metal Sheet Folder
135	Pig Trough
136	Wire Ropes
137	JF Forage Harvester Parts - Suitable for JF FCT 900
138	4x Eight Stud Wheels & Tyres
139	Sheep Hurdles
140	Sheep Hurdles
141	Galvanised Water Trough
142	Large / Long Galvanised Water Trough
143	Pierce Wexfor Seeder
144	Cattle Free Standing 2 in 1 Feeder Barrier / Trough
145	Cattle Ring Feeder

Lloyd Williams & Hughes

146	5x Feeding Barriers - Approx 13ft
147	Square Bale Feeder - Extra two end panels included
148	Square Bale Feeder - One long side panel missing
149	Square Bale Feeder
150	Tombstone Ring Feeder
151	Bamford OC1 Roller Mill
152	Rotovator
161	Timber Flatbed Trailer
162	McKenna Buck Rake - JCB Q Fit Brackets
163	Bamford Octopus Seed Drill
164	Ransomes Potato Planter
165	Topper
166	Vicon Acrobat
167	Tipping Trailer
168	Small Bale Trailer
169	Roller Shutter Door - 6.6m wide / 3m High
170	4x Augers
171	Parmiter Shear Grab - JCB Q Fit Brackets
172	1440Litre Tank
173	Rear-end Bale Handler
174	Grader Blade Attachment
175	Log Splitter
176	Nugent Bale Handler - Euro Brackets
177	5ft Tine Grab - Tullow Engineering - Trima Brackets
178	Teagle Grain Dryer



Lloyd Williams & Hughes

179	Grain Trailer Doors
180	10,000Litre Tank
181	Land Roller - Waunfawr manufacturer
182	Dump Trailer
183	Bailey 9 Tonne Tipping Trailer with Bale Extension - Year 2020
184	West 10 Tonne Silage / Grain Trailer - With High Speed Road Tyres
185	West 10 Tonne Silage / Grain Trailer - With High Speed Road Tyres
186	Howard Selectatilt Rotospike
187	4 Tonne Tipping Trailer - Twin Axle
188	Lely 280 L Mower - Year 2005
189	Loader Bucket - Euro Brackets
190	Loader Bucket - Euro Brackets
191	Loader Bucket - Euro Brackets
192	ATV Sheep Trailer
193	Galvanised Sheep Trailer
194	Tad-Len Sprayer - Year 2012
195	Allman Sprayer - Year 2012
196	Bomford B457 Hedge Cutter - Joystick Control
197	Chieftain Agri Tri-Axle Low Loader Trailer - 20 Tonne
198	Geith Gravel Cart
199	Twose TF500 Hedgecutter Year 2011 / Electric Control
200	Jarret Folding Chain Harrow
201	Ifor Williams TA5GHD Livestock Trailer Sheep Decks - Year 2007
202	Ifor Williams LM146G Flatbed Trailer with Sides + Ramps



Lloyd Williams & Hughes

203	Kuhn PR12060 Bale Shredder Straw or Silage
204	Turbo Tiller
205	Grays One Pass Harrow - 3m
206	Browns Flat 8 Grab
207	Cook Flat 8 Bale Sledge
208	Lister Bale Elevator
209	Disc Plough
210	Land Roller
211	Major 900SM Offset Topper Year 2008
212	Opico Sward Lifter Year 2017 - Auto-Reset
213	Twose Grab - Skid Steer Brackets
214	Claas Jaguar 60E Forage Harvester
215	Massey Ferguson 214 Baler
216	Lely 280M Mower Year 2011
217	Lely Welger RP245 Round Baler Bale Count - 22,791
218	Twose 520 Hedgecutter
219	Marshall BC21 Flat/Bale Trailer Twin-Axle / 8Tonnes
220	Williams Livestock Box Approx. 18ft
251	Manitou 160ATJ Elevated Work Platform 16m reach - Solid Wheels – Year 2007 - 4-Wheel-Drive - Tilting Bracket Operators Basket - Mani Access - Joystick Control

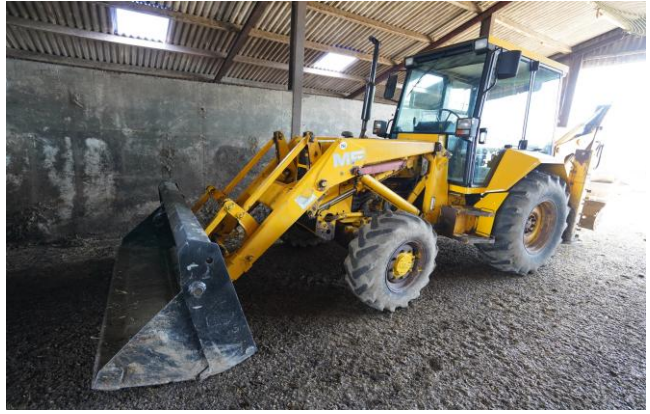
Lloyd Williams & Hughes

252	Massey Ferguson 50HX S Series Digger F852 CKO - Year 1989 - MF450 Deep Dig Dipper - Full Spec 5 Gear - Together with a 4-in-1 Front Bucket - Ditching Bucket - Quick Hitch Bracket – 4,058 Hours on clock (NOT WARRANTED)
253	Hitachi Zaxis 27U Excavator Year 2009 / 2.7tonnes / Quick Hitch / 1,515 Hours
253a	2ft Excavator Bucket
253b	1ft Excavator Bucket
253c	Drainage Excavator Bucket
253d	SGA Ricombi Flail Hedgecutter Attachment Year 2020
254	JCB JS130 Excavator Steel Tracks - 13tonne - Year 2000 - 8,439 hours - Geith Twin Lock Quick Hitch - 3rd Service Hammer Lines – New galvanised and painted panels around engine - No buckets included
255	DAF LF 45.150 Lorry RX54 CPF - 7.5Tonnes - 16ft - 442,661kilometers - Williams Livestock Box with Slam Door
256	Fordson Standard Tractor Year circa 1930 - Narrow Wings - No V5 Document
257	Ferguson T20 Tractor P3 Conversion - No V5 Document
258	Ferguson T20 Tractor Petrol TVO - No V5 Document
259	Fordson Dexta Tractor with Jaguar XJS V12 Engine No V5 Document
260	Fordson Super Dexta Tractor 713 ADL - No V5 Document
261	Fordson Super Dexta Tractor No V5 Document
262	Leyland 245 TractorNo V5 Document

Lloyd Williams & Hughes

263	Ford 5000 Tractor XUX 525K - 8,371 Hours - With V5 Document
264	Ford 7000 Tractor WJC 434V - With V5 Document
265	Ford 7740 Tractor L282 VEY - 8,601 Hours (NOT WARRANTED) - Dual Power 5L - With V5 Document
266	Ford 7740 Tractor P324 GEY - 7,491 Hours (NOT WARRANTED) - Dual Power 5L - With V5 Document
267	New Holland TM140 Tractor CX03 HBY - 4,787 Hours - Range Command Gearbox - 40K Road Speed
268	New Holland T5070 Tractor With New Holland 730TL Loader Frame - 3,349 Hours - 40K Road Speed - Dual Power
269	Ford 4600 Tractor 1,315 Hours (NOT WARRANTED) - With V5 Document
270	Massey Ferguson 565 Tractor GJC 455X - 4,689 Hours (NOT WARRANTED) - Dry Clutch P.T.O

Lloyd Williams & Hughes



Lloyd Williams & Hughes



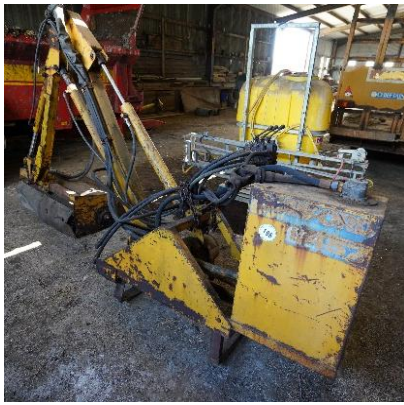
Lloyd Williams & Hughes



Lloyd Williams & Hughes



Lloyd Williams & Hughes



Lloyd Williams & Hughes

Sale Arrangements

The site is a farm yard with outbuildings surrounding the sale fields, viewing available only on specified day – Friday 20th June (11.00am until 3.00pm). Private arrangements for viewing is not available.

Parking

ONSITE PARKING – Purchasers will be able to park on the farm in a nearby field to the sale.

Pedestrian/Walking Access Only after parking through the farmyard into the sale field

PLEASE NOTE – AFTER REACHING CAR PARK, VEHICLES ARE NOT ALLOWED TO LEAVE THE SITE UNTIL THE SALE HAS STARTED

Site Safety

The site is a farmyard with hazardous areas, therefore care should be taken whilst inspecting the items and during the sale. We kindly ask for everyone to respect the boundaries on the sale day without venturing into non-accessible areas, respecting neighbours and the vendor's privacy .

The vendor and auctioneers shall not be liable to anyone who may stray to unauthorised areas of the site.

Location

To be held at Glyddyn Mawr, Y Ffôr, Pwllheli, Gwynedd, LL53 6RR

The sale is best accessed off the A499.

From Y Ffôr, head South on the A499 towards Pwllheli. Take a right hand turn before Bryn Beryl Hospital, follow this road for 1 mile where you will reach Glyddyn Mawr.

From Pwllheli, head North on the A499 towards Y Ffôr and Caernarfon. After passing Bryn Beryl Hospital on your left, take the first left turn. Follow this road for 1 mile where you will reach Glyddyn Mawr.



Auctioneers

Lloyd Williams & Hughes
Bryncir Auction Centre
Bryncir
Garndolbenmaen
LL51 9LX

01766 530 828
[lw@bryncir@btconnect.com](mailto:lw@bryncir.btconnect.com)
Facebook @bryncir

Canolfan Arwerthiant **BRYNCIR** Auction Centre

01766 530 828 • www.lwhbryncir.co.uk • rhian@lwhbryncir.co.uk



Priswyr ac Arwerthwyr • Auctioneers and Valuers

Dydd Llun • Monday - Sel Stôr • Store Sales:

- Store Cattle
- Stock Bulls
- Breeding Ewes
- Cows & Calves
- Store Sheep
- Stock Rams
- Weanlings
- Calves

Dydd Mercher • Wednesday - Da Tew • Fatstock:

- Prime Cattle
- Cull Ewes
- Cull Cattle
- Fat Lambs

Arwerthiannau Eraill • Other Sales:

- Machinery & Tools
- Pedigree & Society
- Rare Breeds & Poultry
- Dispersal Sales

Tir ac Eiddo

LWH

Land and Property



rightmove

Zoopla

Syrfewyr Siartredig a Gwerthwyr Eiddo Chartered Surveyors and Estate Agents

Tir, Tai, Fferm, Busnes, Masnachol
Land, Residential, Farm, Business, Commercial

Prisio, Gwerthu, Gosod, Iawndal, Cyngor
Valuation, Sales, Lettings, Compensation, Advice

01758 719 682 • www.lwhproperty.com • office@lwhproperty.com