



**63rd ANNUAL SALE OF
44**

HARDY HOME BRED WELSH MOUNTAIN RAMS

**B & H JONES
GWASTADANAS
NANT GWYNANT
CAERNARFON
LL55 4NW**

**TO BE SOLD AT GWASTADANAS
TUESDAY 4th OCTOBER 2022
AT 5.00.P.M.**

**Auctioneers:
LLOYD WILLIAMS & HUGHES**

WHAT IS PERFORMANCE RECORDING?

Ewes and lambs in hill flocks are individually monitored and key indicators of commercially significant traits are recorded. The data is then analysed and the EBVs and Indexes that are the outcome, are a prediction of how progeny will perform which in turn can impact on your profits.

To calculate the EBVs, Prohill are recording

- flock mating information and pre-tupping weights
- scanning results
- lambing ease and vigour
- 8 week weights
- backfat scanning at 20 weeks.

The data is analysed and used to create the Welsh Index which identifies sheep with superior breeding potential for meat and maternal traits, predicting the value of each ram to your flock.

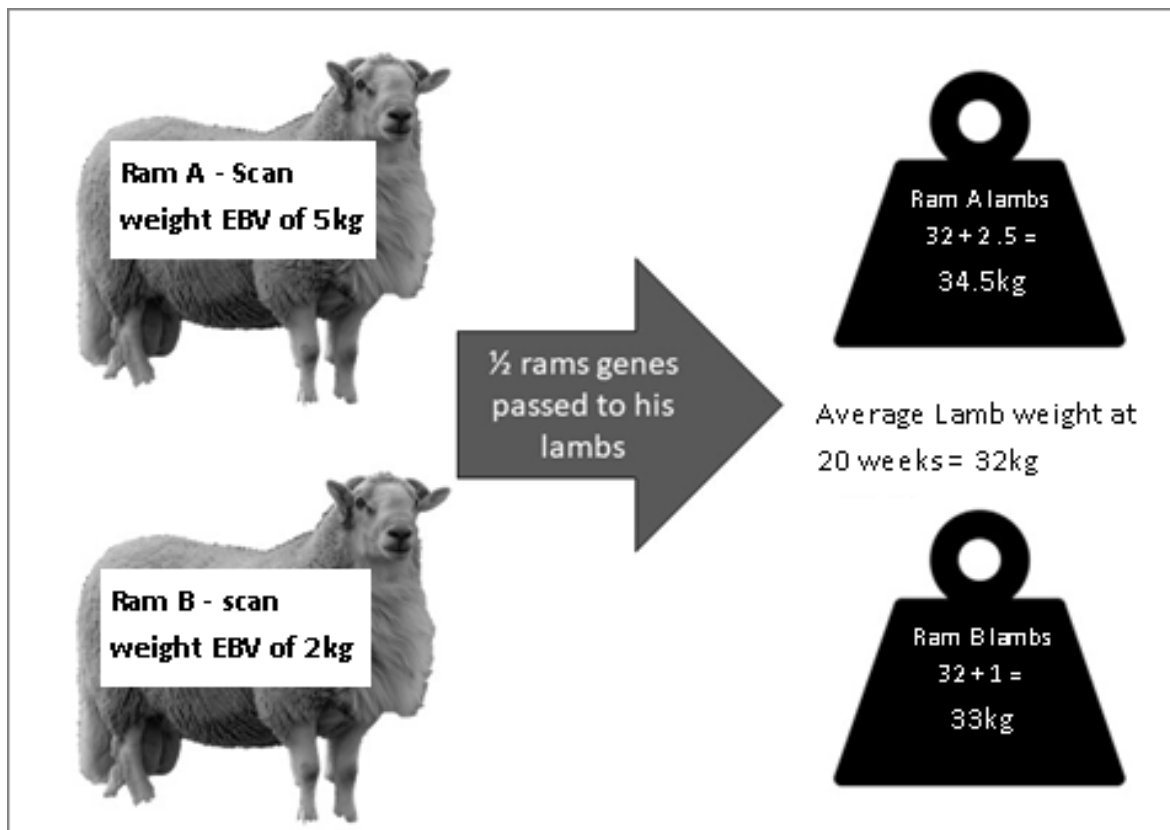
You can use the estimated breeding values to pick rams that will improve the performance of their lambs and their daughters that come in to your flock.

EBVs are expressed in the same units as the recorded trait (e.g. kg for eight week weight) and they relate to a common baseline. This baseline of zero relates to the average breeding value of lambs born in the year in 2015.

EBVs are easy to interpret, for example:

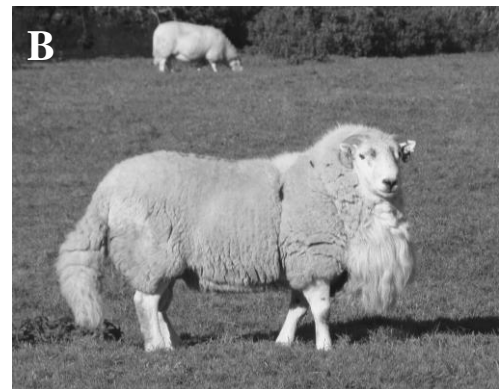
A ram with an EBV of +6 for scan weight is estimated to have the genetic potential to be 6kg heavier at 20/21 weeks compared to one with an EBV of 0.

A recorded ram will only pass on half of its genes to its lambs so its EBVs must be halved in order to estimate the average genetic worth of its progeny.

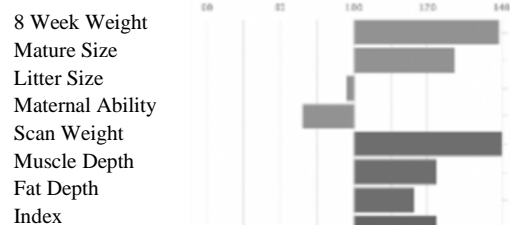
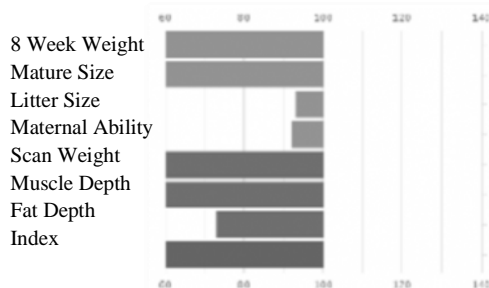


CAN YOU SELECT A GOOD TUP BY EYE?

These two rams were a very similar type and were both purchased for four-figure sums and unrecorded at the time of purchase.



After joining a performance recorded flock, EBVs were calculated from the performance of the rams progeny. Ram A's lambs were mainly sold as store lambs and failed to make any significant growth. In comparison ram B produced fast finishing lambs that graded well. Ram A's EBVs were found to be below average on most traits, ram B's however have been proven above average for most traits, as shown below.



Performance recording is an additional tool to assist in decision making when buying rams for your system. It allows you to make informed decisions about the rams, estimating their potential and the future performance of your hill flock.

**For information, contact Bedwyr Jones on
07801 355447**

HYRDDOD WEDI RECORDIO PERFFORMIAD

SEL	RHIF TAG	INDEX
1	UK 0 702362 17952	141
2	UK 0 702362 17876	99
3	UK 0 702362 17781	141
4	UK 0 702362 17627	137
5	UK 0 702362 17546	184
6	UK 0 702362 17587	125
7	UK 0 702362 17650	140
8	UK 0 702362 17609	108
9	UK 0 702362 17666	128
10	UK 0 702362 17796	111
11	UK 0 702362 17968	119
12	UK 0 702362 17944	170
13	UK 0 702362 17811	102
14	UK 0 702362 17911	145
15	UK 0 702362 17913	130
16	UK 0 702362 17637	172
17	UK 0 702362 17689	133
18	UK 0 702362 17768	113
19	UK 0 702362 17606	76
20	UK 0 702362 17969	156
21	UK 0 702362 17732	143
22	UK 0 702362 17762	92
23	UK 0 702362 17757	157
24	UK 0 702362 17904	145
25	UK 0 702362 17932	139
26	UK 0 702362 17889	135
27	UK 0 702362 17724	104

HYRDDOD HEB INDEX

SEL	RHIF TAG
28	UK 0 702362 18923
29	UK 0 702362 19209
30	UK 0 702362 19218
31	UK 0 702362 19205
32	UK 0 702362 18787
33	UK 0 702362 19239
34	UK 0 702362 18908
35	UK 0 702362 19225
36	UK 0 702362 19203
37	UK 0 702362 18993
38	UK 0 702362 18722
39	UK 0 702362 18622
40	UK 0 702362 18949
41	UK 0 702362 19204
42	UK 0 702362 18921
43	UK 0 702362 19191
44	UK 0 702362 18957